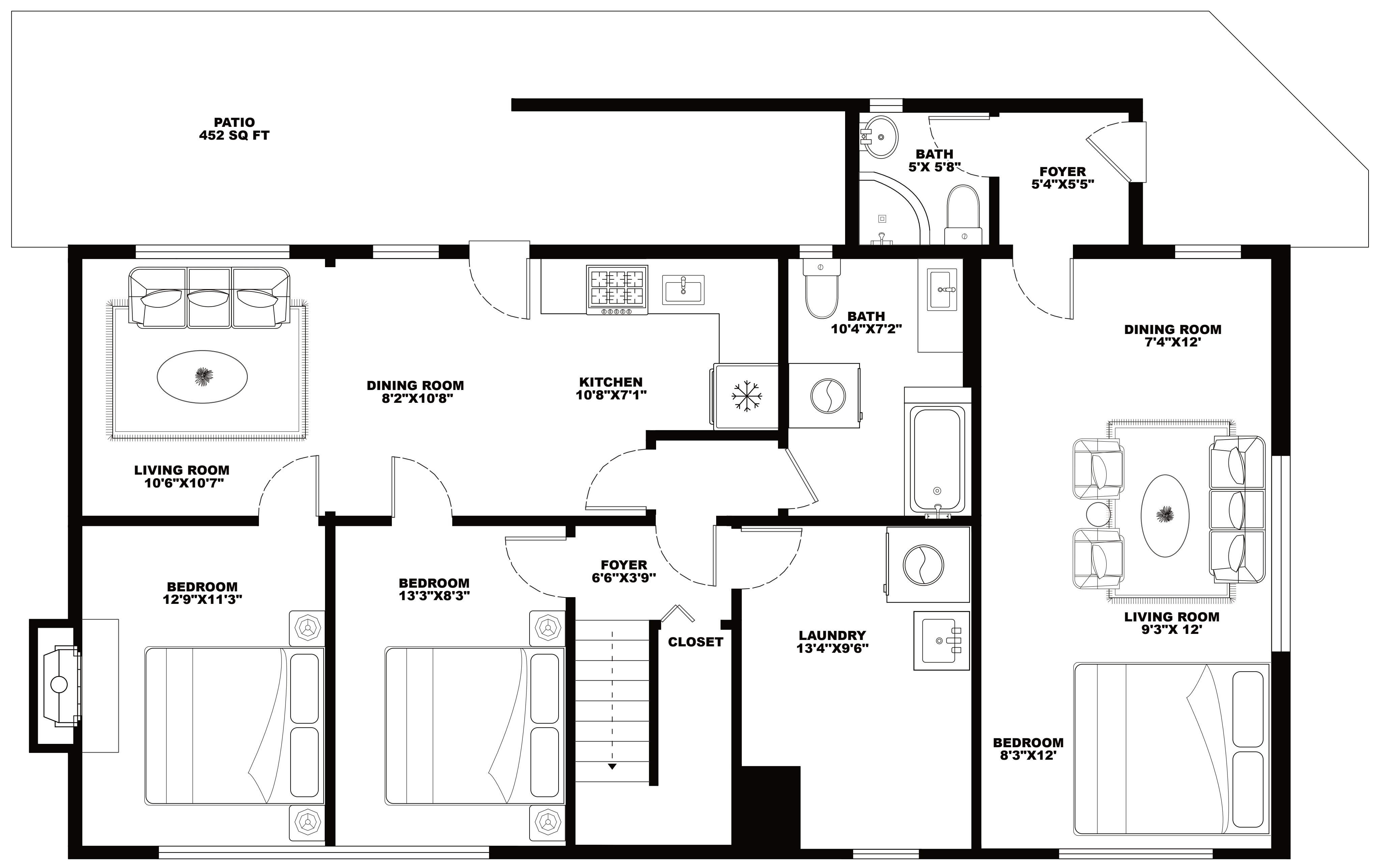
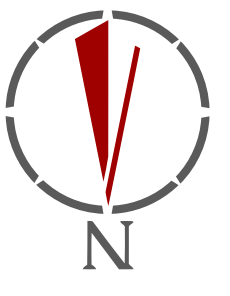


MAIN FLOOR



LOWER FLOOR



LOWER FLOOR : 1,353 SQ FT
 BALCONY: 486 SQ FT MAIN FLOOR : 1,299 SQ FT
 AUXILIARY AREA **TOTAL: 2,652 SQ FT**

520 BALLANTREE PL WEST VANCOUVER

SIZES AND DIMENSIONS ARE APPROXIMATE, ACTUAL MAY VARY. 2024-05-20