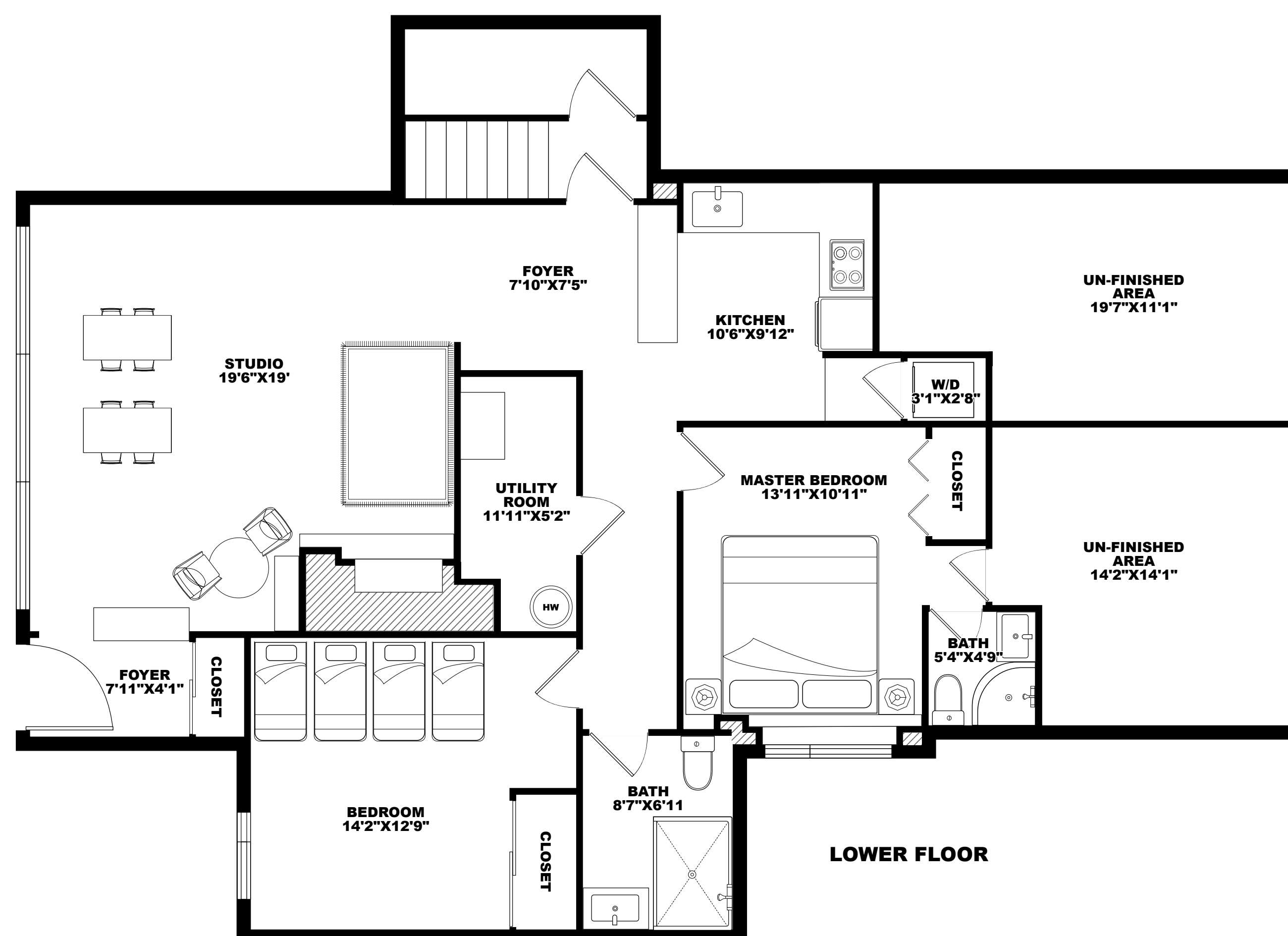
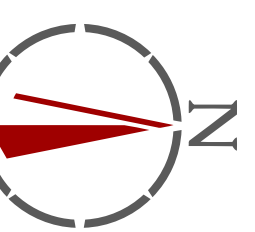


ENTRY →

MAIN FLOOR



LOWER FLOOR



UN-FINISHED AREA: 490 SQ FT

GARAGE: 425 SQ FT

BALCONY: 310 SQ FT

LOWER FLOOR : 1,316 SQ FT

MAIN FLOOR : 2,848 SQ FT

AUXILIARY AREA

TOTAL: 4,164 SQ FT



# 1119 EYREMOUNT DR WEST VANCOUVER

SIZES AND DIMENSIONS ARE APPROXIMATE, ACTUAL MAY VARY.